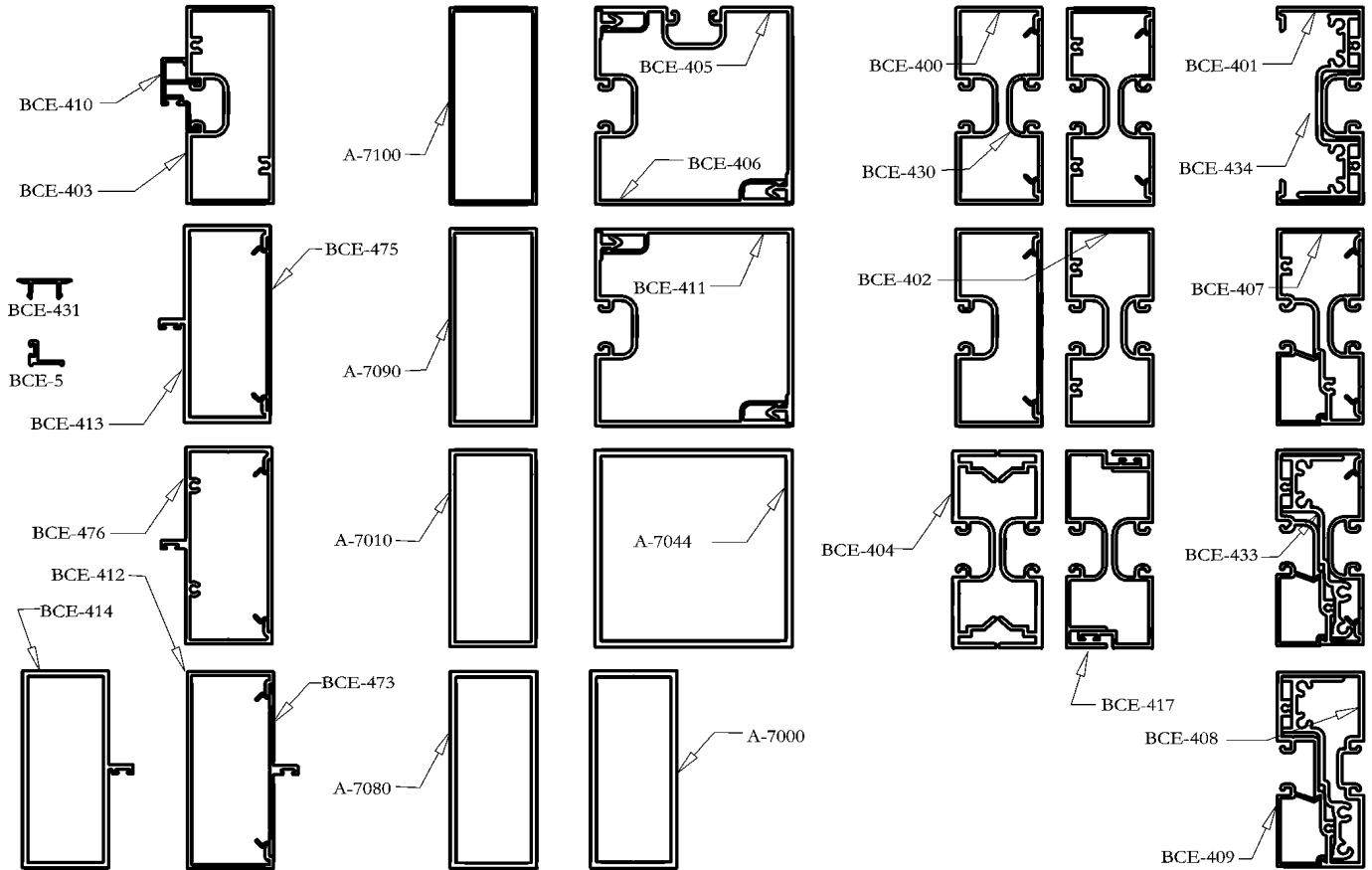


1/4 SIZE DETAILS



THIS SYSTEM IS DESIGNED TO BE ASSEMBLED WITH #8 SCREWS

<u>GASKETS</u>		
UNIVERSAL RUBBER COMPANY 800-782-2375	#2028 #2101	INTERIOR & EXTERIOR FOR 3/8" GLASS
REED RUBBER PRODUCTS 800-325-9698	#3734 #4893	INTERIOR & EXTERIOR ALTERNATIVE
TREMCO 800-321-6357	TR-2062E	INTERIOR & EXTERIOR

<u>DOOR PILE</u>		
SCHLEGEL CORP. 800-828-6237	AS SELECTED	USED WITH BCE-5 AND LIKE SHAPES
AMESBURY GROUP INC. 704-878-6892	AS SELECTED	USED WITH BCE-5 AND LIKE SHAPES

NO TEST DATA AVAILABLE
 TREDEGAR EXTRUSIONS INC. DOES NOT MAKE ANY WARRANTY EXPRESS OR IMPLIED INCLUDING
 NO WARRANTY OF MERCHANTABILITY OR FITNESS FOR A PARTICULAR PURPOSE AND RESERVES
 THE RIGHT TO MAKE CHANGES
 REPRODUCTION RIGHTS RESERVED

PRICING FACTORS
1 3/4" X 4" FLUSH GLAZED
BCE-400 SERIES



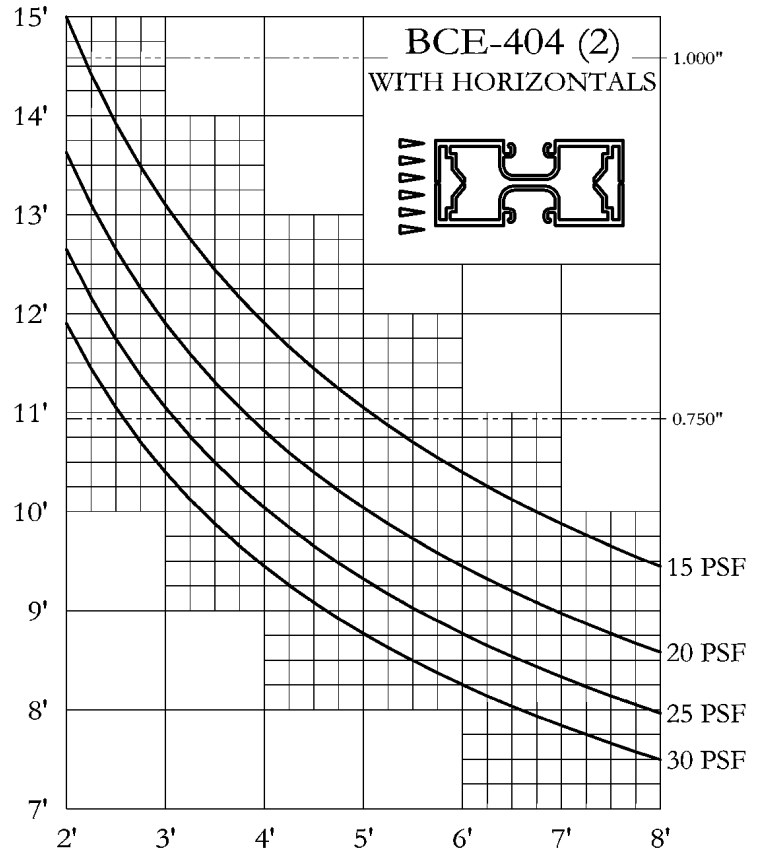
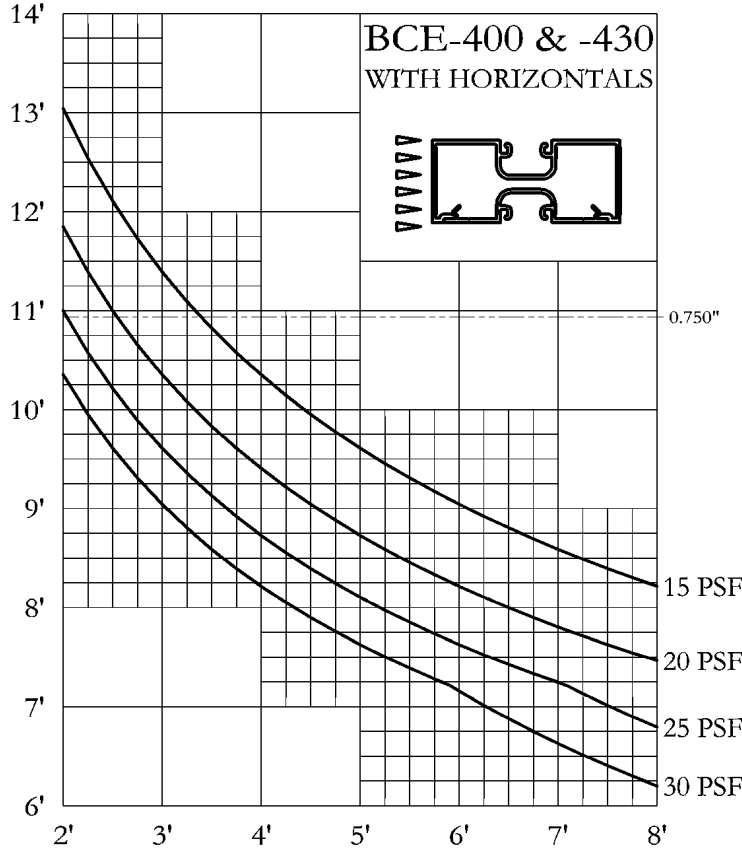
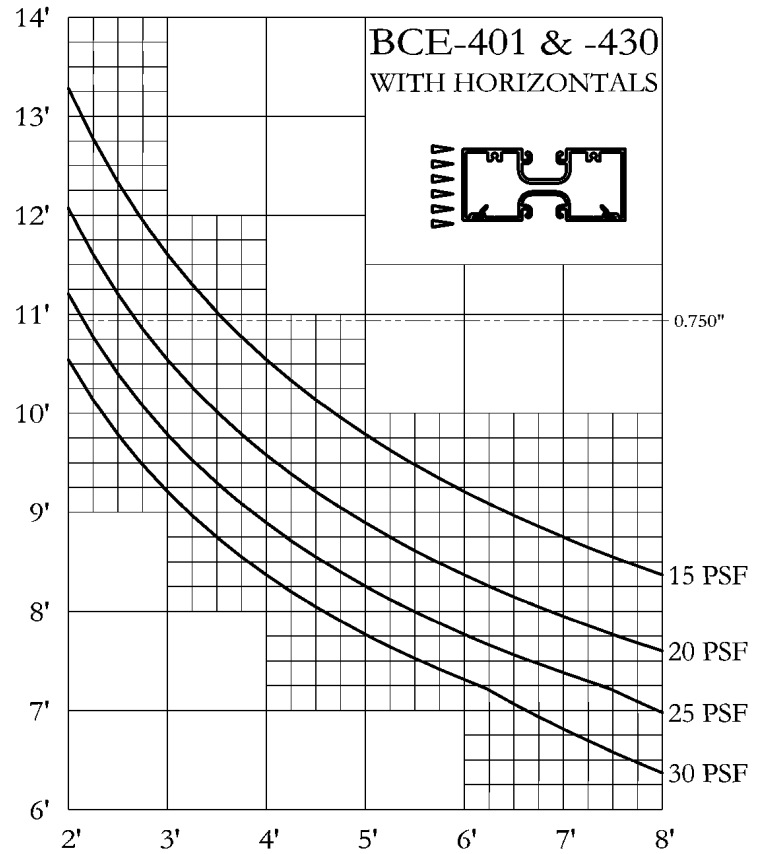
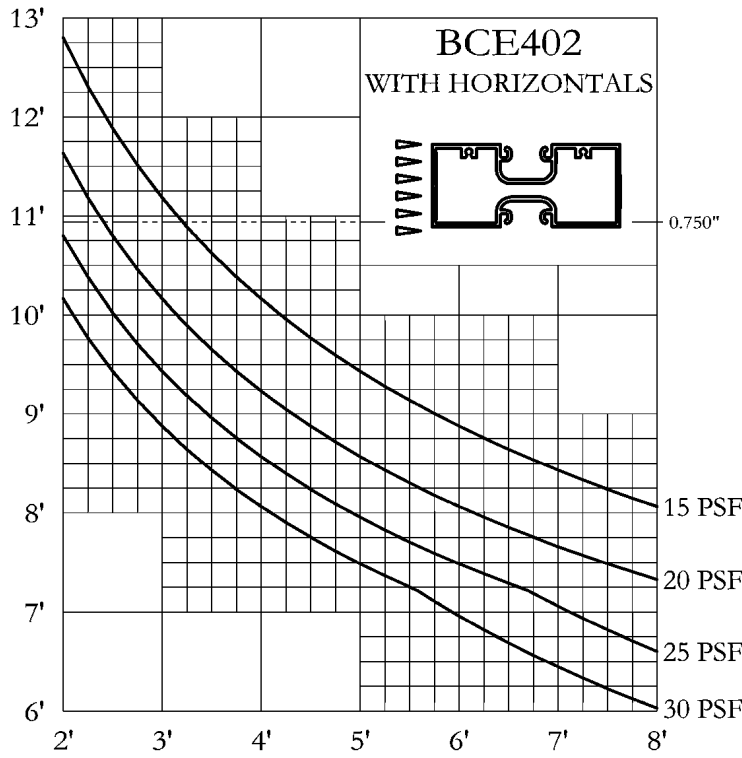
BONNELL
ALUMINUM

WEIGHT PER FT	EST PER	FACTOR	CAVITY AREA	PART NUMBER	STRUCTURAL VALUES			1/8 SIZE DETAILS
					X-X	Y-Y	I S	
1.072	20.936	20	N/A	BCE400	0.286	I	1.789	
					0.248	S	0.895	
1.172	22.482	19	N/A	BCE401	0.297	I	1.912	
					0.250	S	0.956	
1.628	17.153	19	N/A	BCE402	0.555	I	2.066	
					0.598	S	1.033	
1.424	14.536	20	N/A	BCE403	0.547	I	2.018	
					0.589	S	1.009	
1.135	19.087	17	N/A	BCE404	0.074	I	1.660	
					0.136	S	0.830	
1.285	23.720	18	N/A	BCE405	1.841	I	1.706	
					0.700	S	0.595	
1.282	23.753	19	N/A	BCE406	1.725	I	1.827	
					0.605	S	0.689	
0.967	18.229	19	N/A	BCE407	0.229	I	1.528	
					0.236	S	0.701	
1.472	14.389	18	N/A	BCE408	0.402	I	1.845	
					0.392	S	0.861	
0.294	7.705	26	N/A	BCE409	0.021	I	0.095	
					0.031	S	0.110	
0.251	7.076	28	N/A	BCE410	0.010	I	0.037	
					0.022	S	0.045	
1.056	19.485	18	N/A	BCE411	1.696	I	1.665	
					0.615	S	0.595	
0.842	16.707	20	N/A	BCE412	0.288	I	1.723	
					0.242	S	0.862	
1.139	17.936	16	N/A	BCE413	0.384	I	2.195	
					0.308	S	1.096	
1.540	13.016	15	N/A	BCE414	0.740	I	2.447	
					0.562	S	1.223	



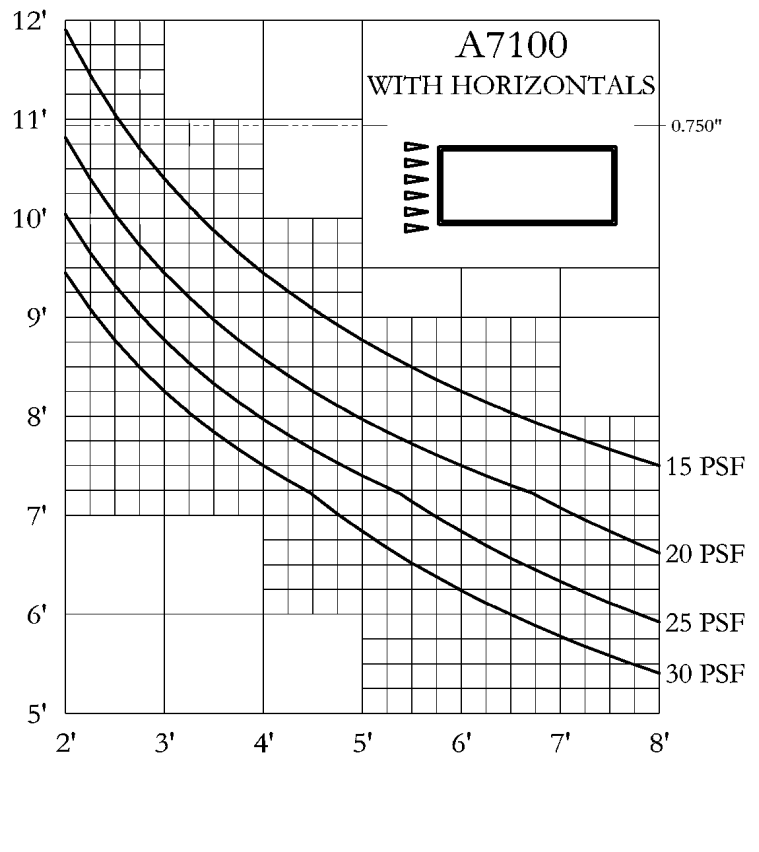
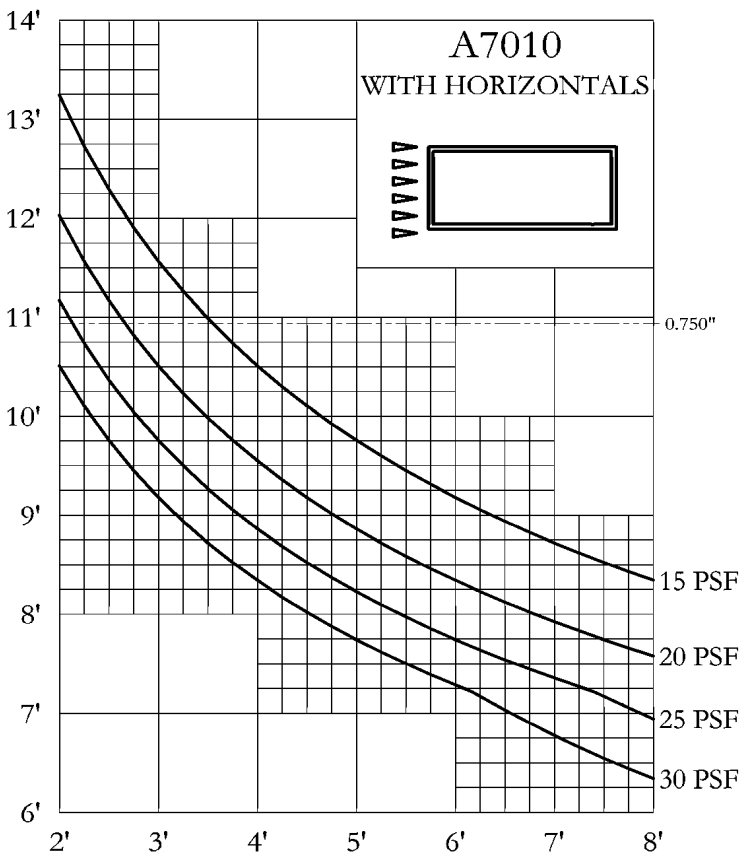
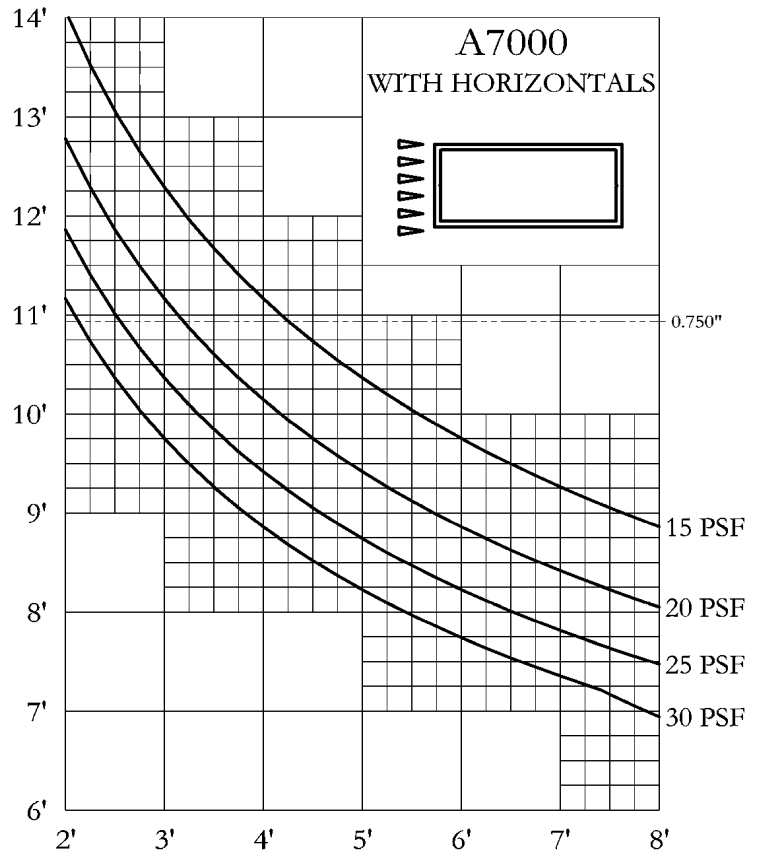
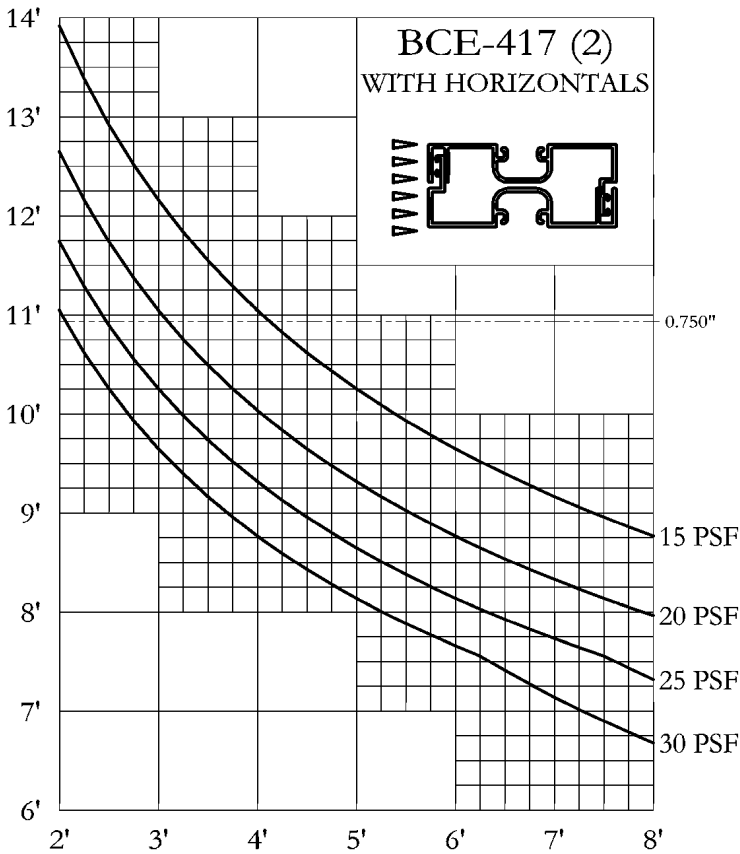
WEIGHT PER FT	EST PER	FACTOR	CAVITY AREA	PART NUMBER	STRUCTURAL VALUES			1/8 SIZE DETAILS
					X-X	I	Y-Y	
0.896	19.196	21	N/A	BCE417	0.106	I	1.327	
					0.097	S	0.634	
0.552	12.277	22	N/A	BCE430	0.025	I	0.395	
					0.055	S	0.226	
0.112	3.494	31	N/A	BCE431	0.008	I	0.001	
					0.015	S	0.004	
0.899	14.003	16	N/A	BCE433	0.106	I	1.103	
					0.143	S	0.518	
0.979	15.098	15	N/A	BCE434	0.058	I	1.271	
					0.074	S	0.636	
0.448	9.805	22	N/A	BCE473	0.008	I	0.356	
					0.016	S	0.203	
0.370	8.473	23	N/A	BCE475	0.001	I	0.356	
					0.003	S	0.204	
1.042	19.196	18	N/A	BCE476	0.349	I	1.938	
					0.276	S	.0962	
0.109	2.712	25	N/A	BCE5	0.004	I	0.002	
					0.009	S	0.006	
1.650	11.488	13	N/A	A7000	0.732	I	2.740	
					0.837	S	1.370	
1.357	11.488	16	N/A	A7010	0.617	I	2.285	
					0.705	S	1.142	
2.324	15.988	13	N/A	A7044	4.854	I	4.854	
					2.427	S	2.427	
1.524	11.500	14	N/A	A7080	0.683	I	2.546	
					0.781	S	1.273	
1.202	11.500	19	N/A	A7090	0.555	I	2.039	
					0.634	S	1.020	
0.968	11.473	23	N/A	A7100	0.455	I	1.660	
					0.520	S	0.830	

WINDLOAD CHARTS
1 3/4" X 4" FLUSH GLAZED
BCE-400 SERIES



#1 THESE WINDLOAD CHARTS ARE BASED UPON THE LESSER OF DEFLECTION RATIO (L/175) OR STRESS (12667)

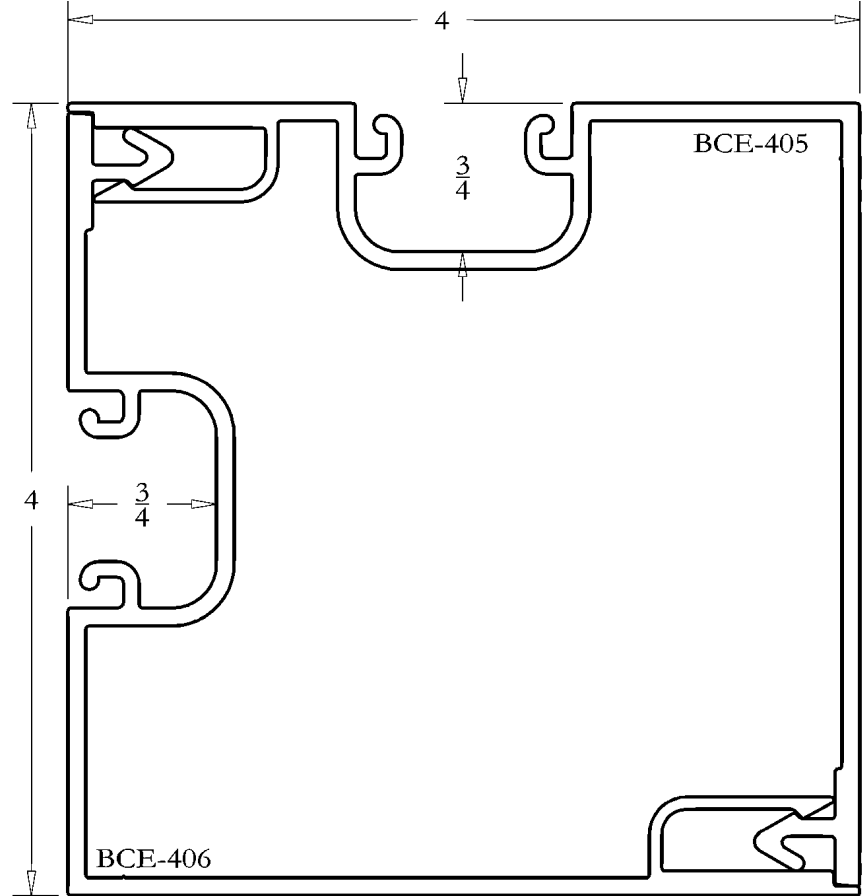
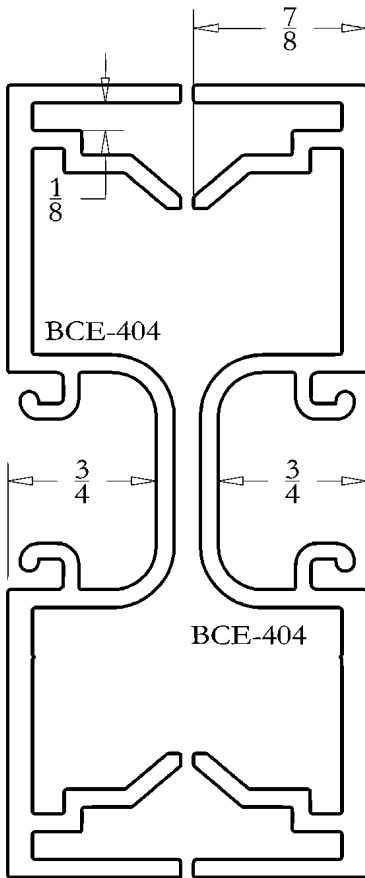
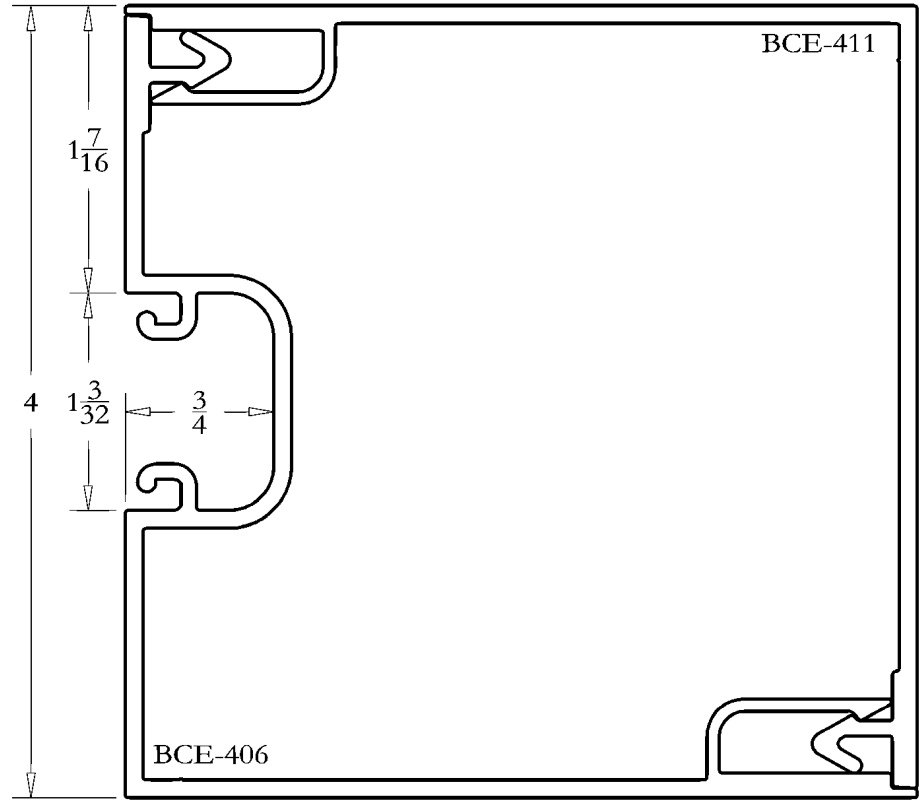
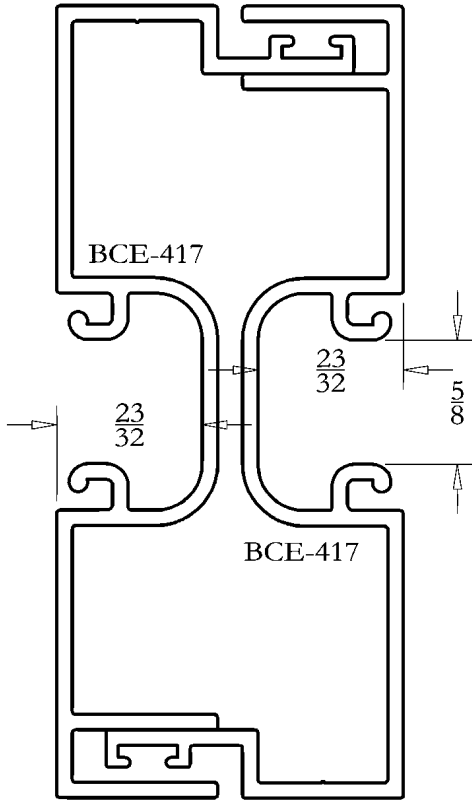
#2 THESE STRUCTURAL CURVES ARE ESTIMATES AND ARE PRESENTED TO THE BEST KNOWLEDGE OF THE WILLIAM L BONNELL CO. IT IS, HOWEVER, THE RESPONSIBILITY OF THE CUSTOMER TO BE SATISFIED THAT THE CURVES ARE CORRECT. THE WILLIAM L BONNELL CO. MAY NOT BE HELD RESPONSIBLE IN ANY WAY FOR THE FAILURE OF PERFORMANCE RESULTING FROM THE USE OF THESE CURVES.



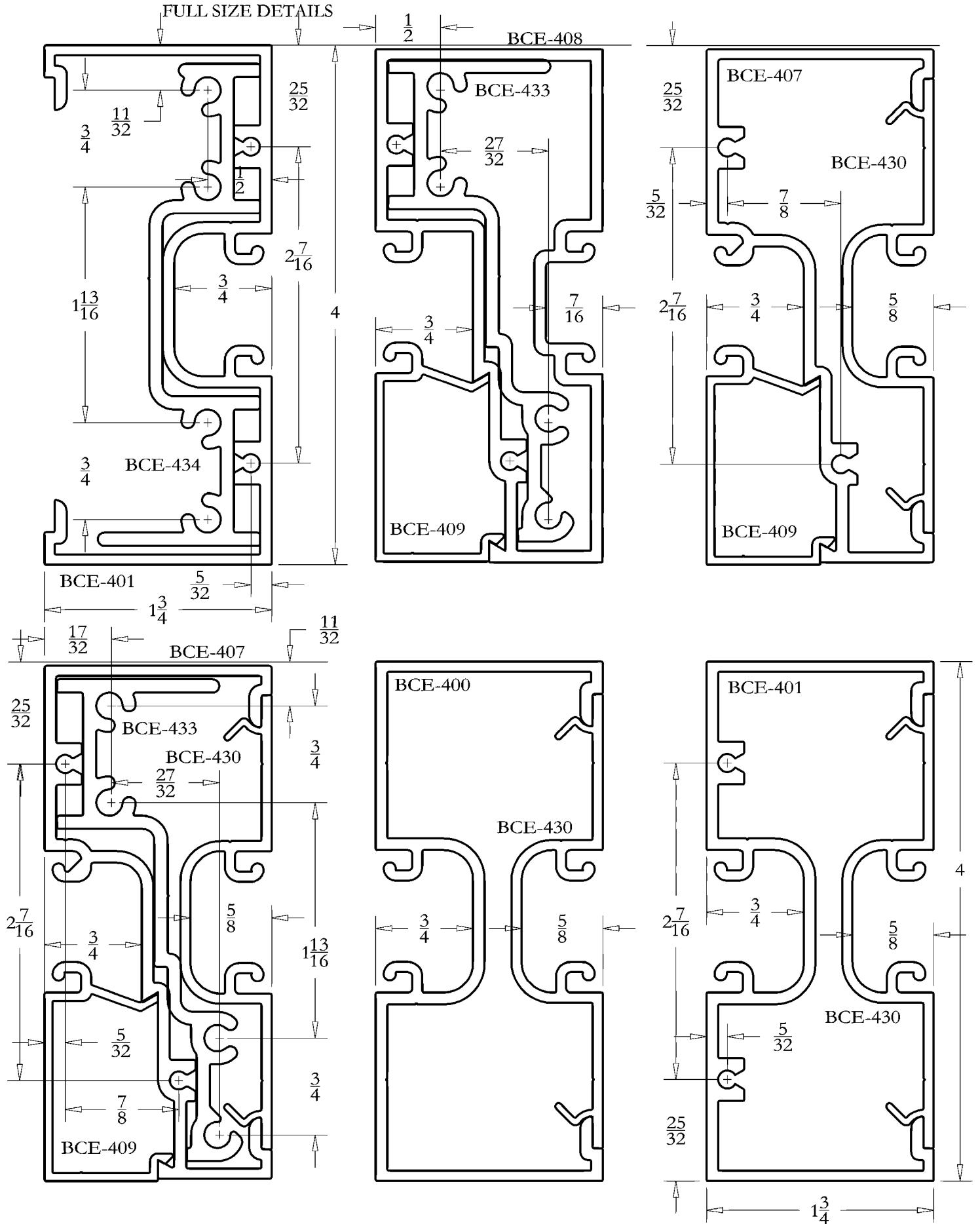
#1 THESE WINDLOAD CHARTS ARE BASED UPON THE LESSER OF DEFLECTION RATIO (L/175) OR STRESS (12667)

#2 THESE STRUCTURAL CURVES ARE ESTIMATES AND ARE PRESENTED TO THE BEST KNOWLEDGE OF THE WILLIAM L BONNELL CO. IT IS, HOWEVER, THE RESPONSIBILITY OF THE CUSTOMER TO BE SATISFIED THAT THE CURVES ARE CORRECT. THE WILLIAM L BONNELL CO. MAY NOT BE HELD RESPONSIBLE IN ANY WAY FOR THE FAILURE OF PERFORMANCE RESULTING FROM THE USE OF THESE CURVES.

FULL SIZE DETAILS

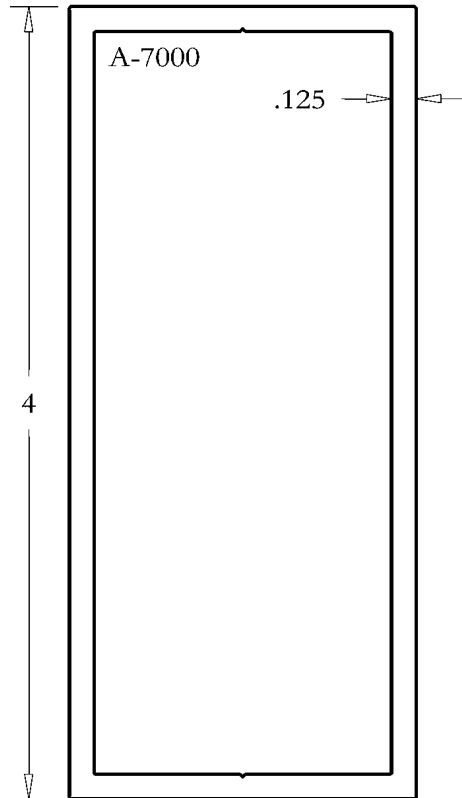
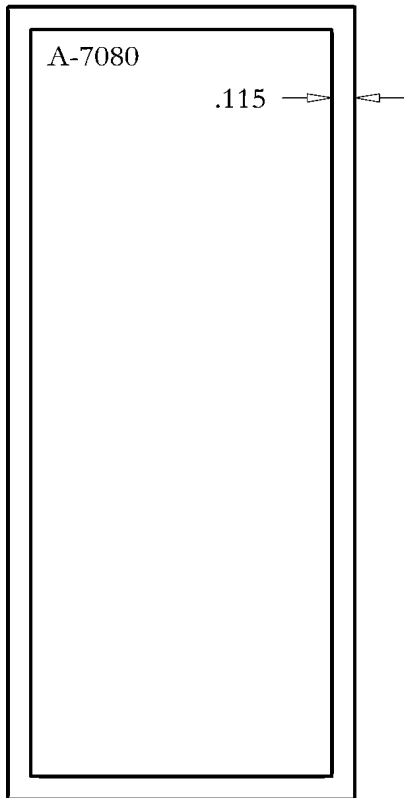
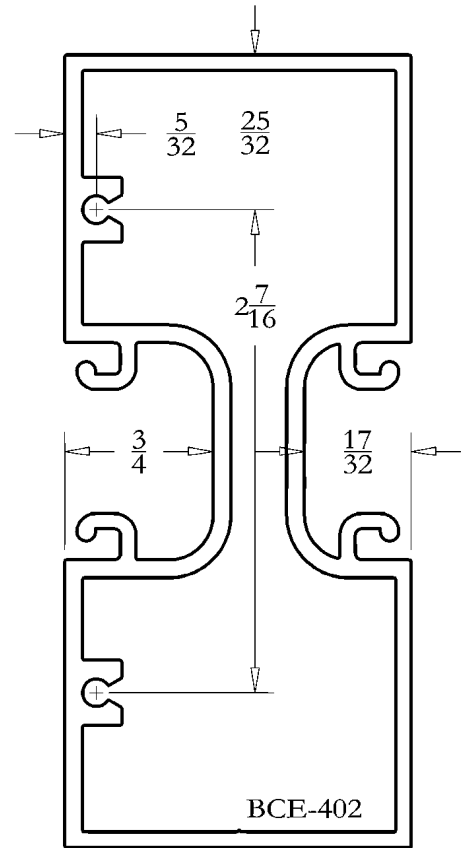
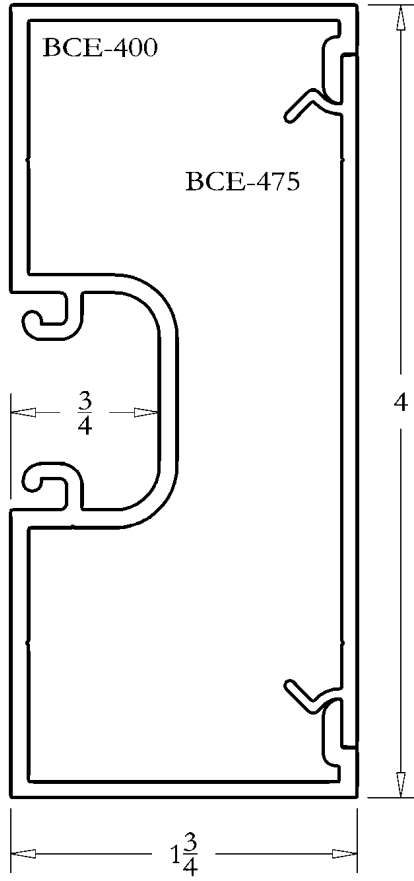
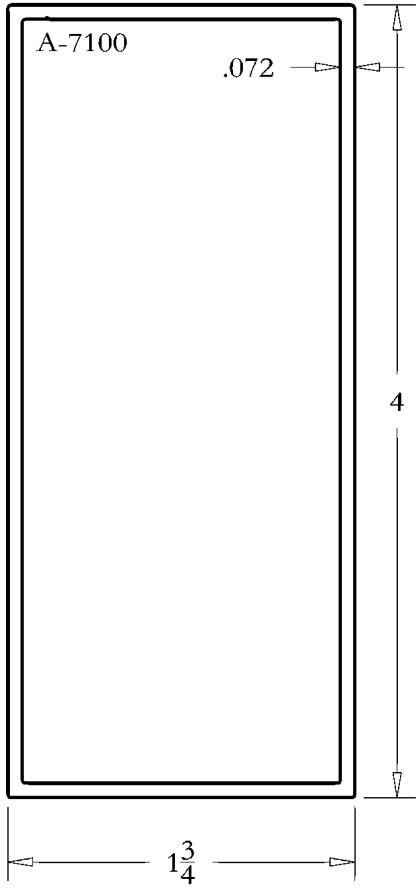


FULL SIZE DETAILS





FULL SIZE DETAILS



DETAIL SHEET
1 3/4" X 4" FLUSH GLAZED
BCE-400

FULL SIZE DETAILS

